

SPECIAL PURPOSE JAR UN-SCRAMBLER

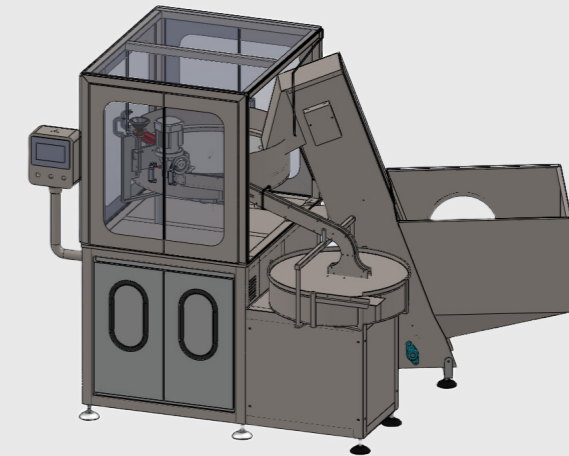
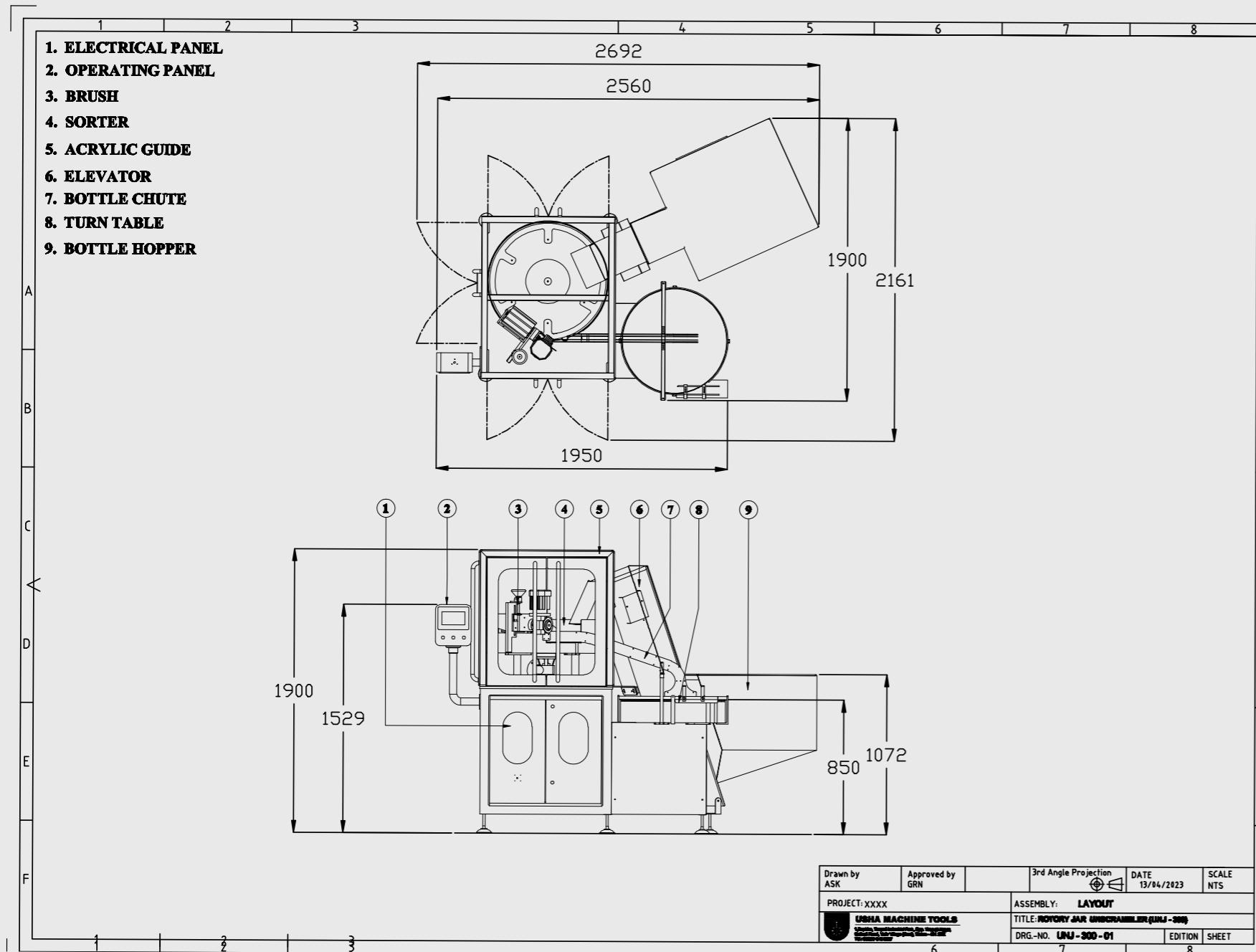
MODEL: UNJ-300



USHA MACHINE TOOLS
DELIVERS THE PACKAGING SOLUTION YOU NEED

UNJ 300 is for small jars/cups that have diameters greater than their height. UNJ 300 orients the jars/cups using a mechanically designed chute which orients and places the correct products on a turn table. This turn table's exit is connected to the in-feed conveyor of the upstream machine. This machine can give an output of up to 320 BPM.

MACHINE LAYOUT



https://youtu.be/_DtHaexjhXg

Client Projects With UNJ-300

- Rotary Jar Un-Scrambler

TECHNICAL SPECIFICATIONS

M.O.C.	S.S. 304 / M.S. (POWDER COATED)
MACHINE DIMENSIONS (LxWxH)	
BOTTLE SHAPES	Round
BOTTLE DIAMETER (Maximum)	40mm - 75mm
BOTTLE HEIGHT (Maximum)	20mm - 65mm
BOTTLE VOLUME	10g - 50g
MACHINE SPEED	100 BPM - 320 BPM
HOPPER CAPACITY	15 CU. FT
POWER SOURCE	440V 50 Hz 3PHASE
POWER CONSUMPTION	3HP 2.25kW
AIR PRESSURE	1 BAR
MACHINE WEIGHT	500kg
NOISE LEVEL	85dB