

LINEAR BOTTLE UN-SCRAMBLER

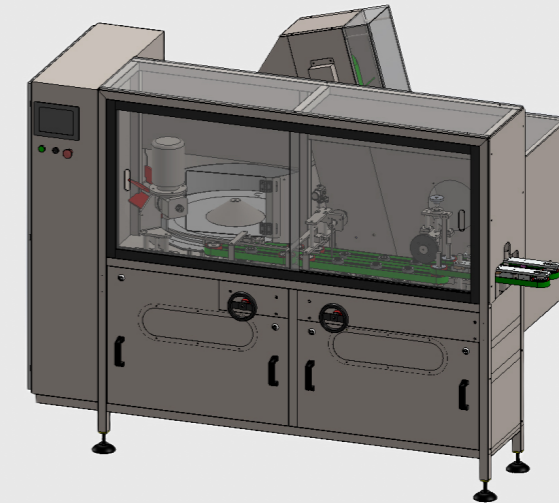
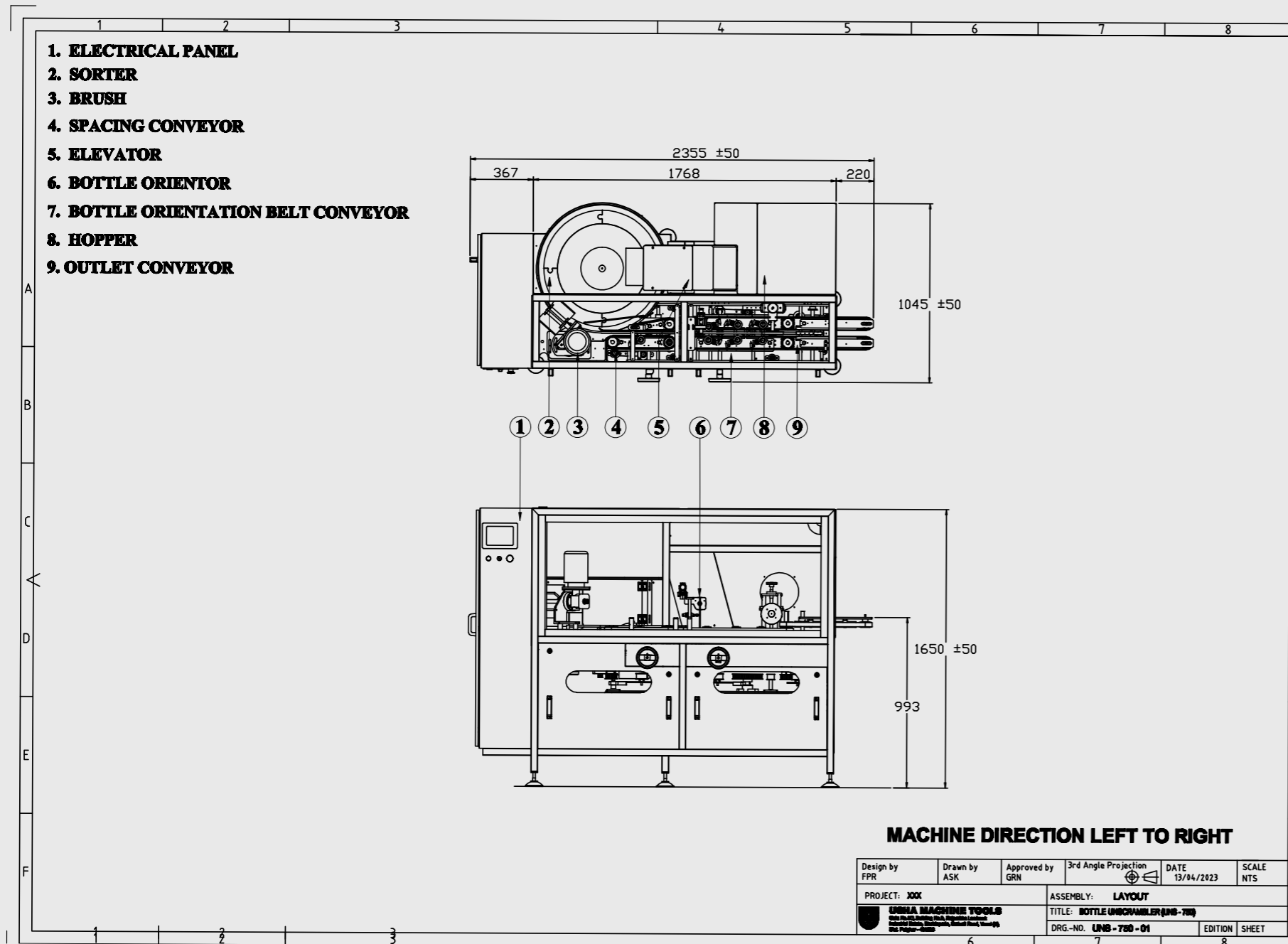
MODEL: UNS-750



USHA MACHINE TOOLS
DELIVERS THE PACKAGING SOLUTION YOU NEED

UNS-750 Linear Bottle Un-Scrambler is specially designed for lower-volume bottles with heights up to 135mm in height. This machine has a compact footprint which allows it to be installed in factories with space challenges.

MACHINE LAYOUT



<https://youtu.be/clnuaN22dVY>

Client Projects With UNS-750

- With In-Line Conveyor
- With Pucking System
- With In-Line Bottom Printing

TECHNICAL SPECIFICATIONS

M.O.C.	S.S. 304 / M.S. (POWDER COATED)
MACHINE DIMENSIONS (LxWxH)	1950mm x 1100mm x 1622mm
BOTTLE SHAPES	All Shapes
BOTTLE DIAMETER (Maximum)	20mm - 60mm
BOTTLE HEIGHT (Maximum)	20mm - 135mm
BOTTLE VOLUME	15ml - 200ml
MACHINE SPEED	80 BPM - 250 BPM
HOPPER CAPACITY	9 CU. FT
POWER SOURCE	440V 50 Hz 3PHASE
POWER CONSUMPTION	3HP 2.25kW
AIR PRESSURE	2 BAR
MACHINE WEIGHT	500kg
NOISE LEVEL	80dB

LINEAR BOTTLE UN-SCRAMBLER

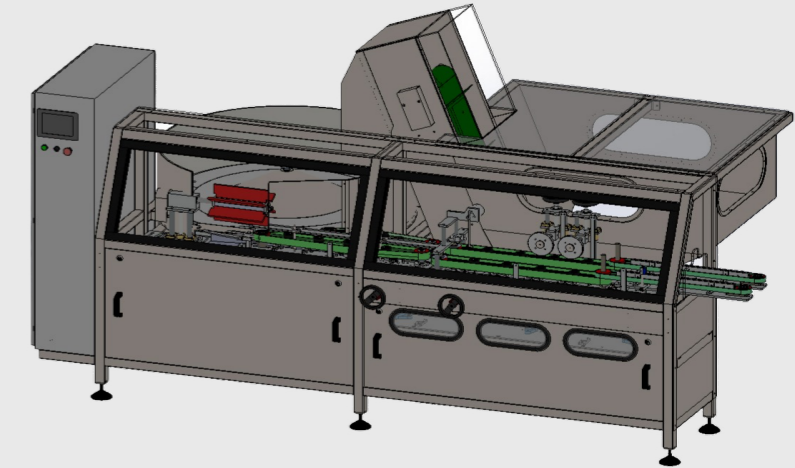
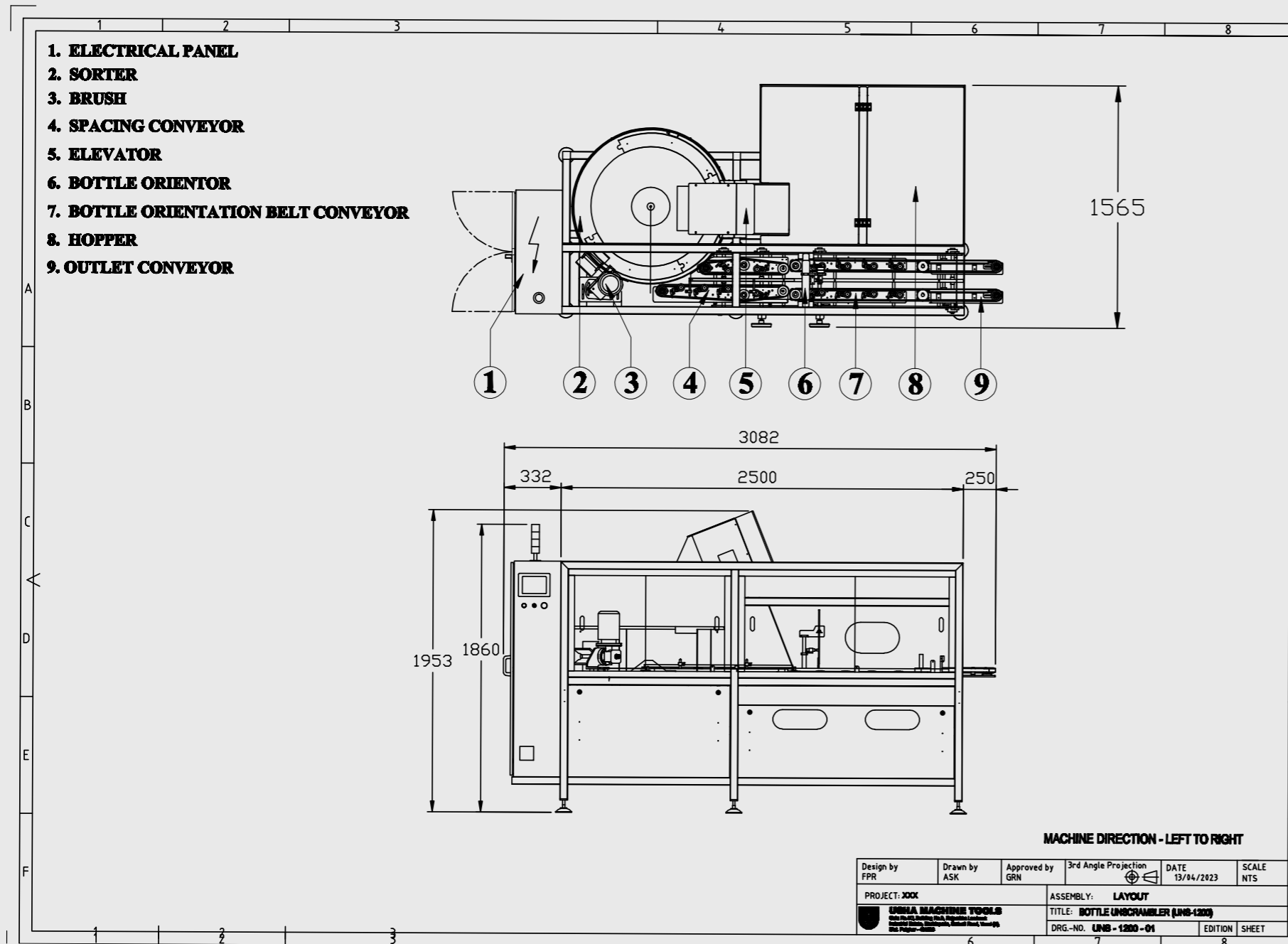
MODEL: UNS-1200



USHA MACHINE TOOLS
DELIVERS THE PACKAGING SOLUTION YOU NEED

UNS-1200 Linear Bottle Un-Scrambler is specially designed for bottles with heights up to 250mm. this machine is able to handle bottles in the range of 15ml to 1L in volume. Speeds up to 350BPM makes this machine a must in high-speed production facilities. UNS-1200 can be installed in all the industries due to its flexible design.

MACHINE LAYOUT



https://youtu.be/QBlxYt_8vhE

Client Projects With UNS-1200

- With In-Line Bottle Pucking System
- With Air Conveyor
- With Accumulation Conveyor

TECHNICAL SPECIFICATIONS

M.O.C.	S.S. 304 / M.S. (POWDER COATED)
MACHINE DIMENSIONS (LxWxH)	3094mm x 1215mm x 1622mm
BOTTLE SHAPES	All Shapes
BOTTLE DIAMETER (Maximum)	20mm - 90mm
BOTTLE HEIGHT (Maximum)	20mm - 270mm
BOTTLE VOLUME	15ml - 1L
MACHINE SPEED	100 BPM - 340 BPM
HOPPER CAPACITY	23 CU. FT
POWER SOURCE	440V 50 Hz 3PHASE
POWER CONSUMPTION	4HP 3kW
AIR PRESSURE	2 BAR
MACHINE WEIGHT	800kg
NOISE LEVEL	80dB

LINEAR BOTTLE UN-SCRAMBLER

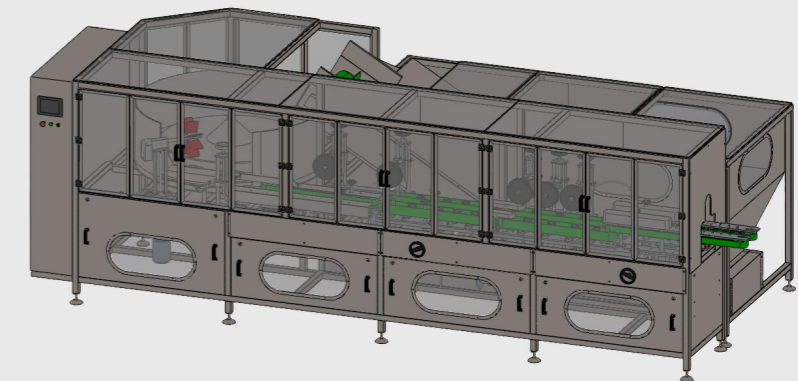
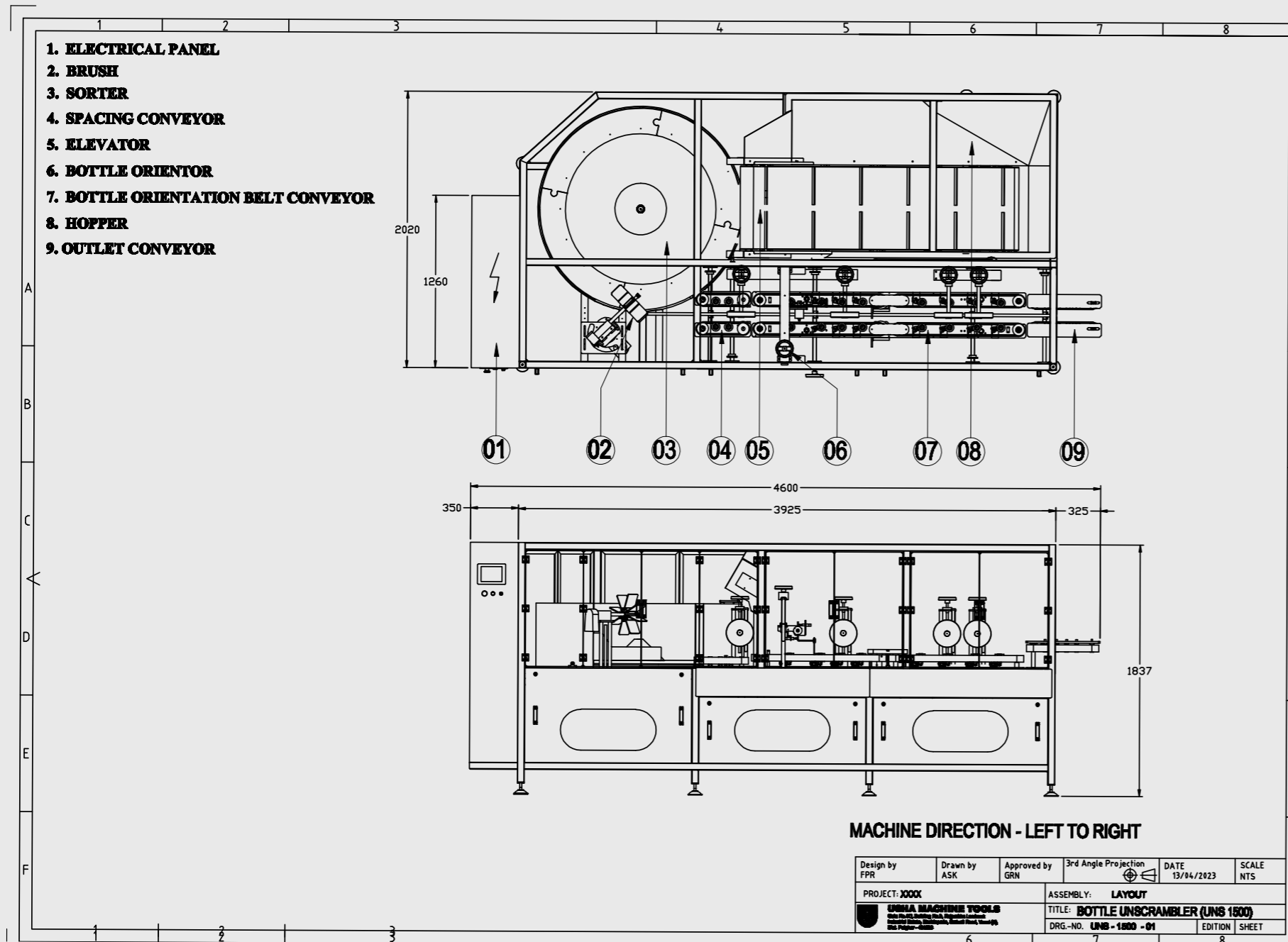
MODEL: UNS-1500



USHA MACHINE TOOLS
DELIVERS THE PACKAGING SOLUTION YOU NEED

UNS-1500 is specially designed for large fill bottles with heights up to 290mm. UNS-1500 is suited for Lubricant & Automotive Industries or FMCG plants with large volume fills in jerry cans up to 5000ml. This machine is able to handle bottles in the range of 500ml to 5L in volume. Speeds of up to 180 BPM makes this machine a must in high-speed production facilities.

MACHINE LAYOUT



<https://youtu.be/7c97IjyUJvY>

Client Projects With UNS-1500

- With In-Line Bottle Pucking System
- With Accumulation Conveyor
- With Secondary Orientation for Off-Centre Necked Bottles

TECHNICAL SPECIFICATIONS

M.O.C.	S.S. 304 / M.S. (POWDER COATED)
MACHINE DIMENSIONS (LxWxH)	5875mm x 2400mm x 1850mm
BOTTLE SHAPES	Round Rectangular Square
BOTTLE DIAMETER (Maximum)	60mm - 75mm 225mm x 80mm
BOTTLE HEIGHT (Maximum)	120mm - 280mm
BOTTLE VOLUME	500ml - 5L
MACHINE SPEED	60 BPM - 180 BPM
HOPPER CAPACITY	32 CU. FT
POWER SOURCE	440V 50 Hz 3PHASE
POWER CONSUMPTION	8HP 6kW
AIR PRESSURE	3 BAR
MACHINE WEIGHT	1500kg
NOISE LEVEL	85dB

SPECIAL PURPOSE JAR UN-SCRAMBLER

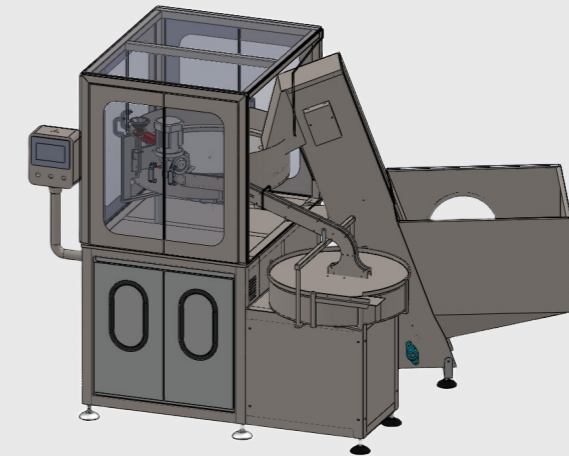
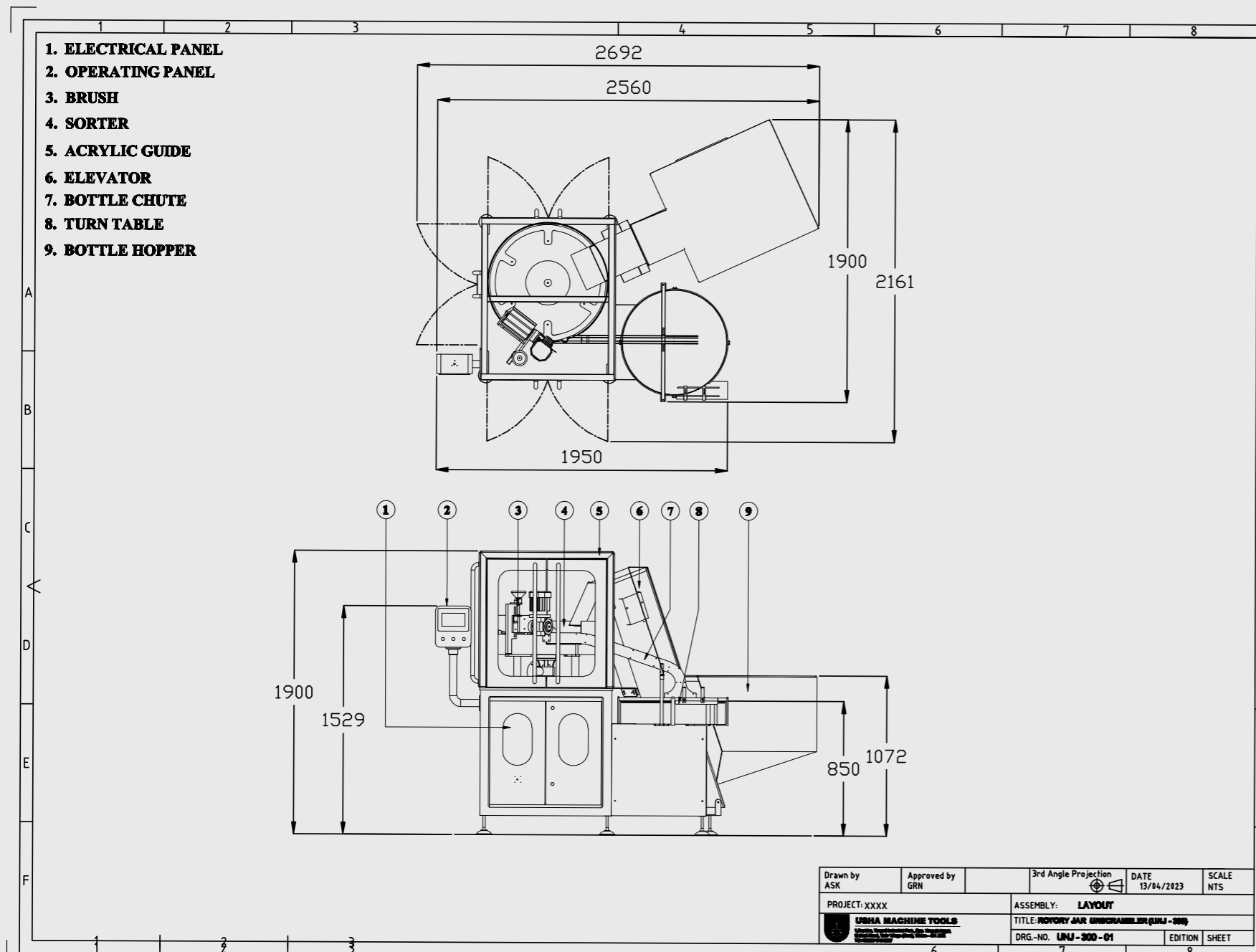
MODEL: UNJ-300



USHA MACHINE TOOLS
DELIVERS THE PACKAGING SOLUTION YOU NEED

UNJ 300 is for small jars/cups that have diameters greater than their height. UNJ 300 orients the jars/cups using a mechanically designed chute which orients and places the correct products on a turn table. This turn table's exit is connected to the in-feed conveyor of the upstream machine. This machine can give an output of up to 320 BPM.

MACHINE LAYOUT



https://youtu.be/_DtHaexjhXg

Client Projects With UNJ-300

- Rotary Jar Un-Scrambler

TECHNICAL SPECIFICATIONS

M.O.C.	S.S. 304 / M.S. (POWDER COATED)
MACHINE DIMENSIONS (LxWxH)	
BOTTLE SHAPES	Round
BOTTLE DIAMETER (Maximum)	40mm - 75mm
BOTTLE HEIGHT (Maximum)	20mm - 65mm
BOTTLE VOLUME	10g - 50g
MACHINE SPEED	100 BPM - 320 BPM
HOPPER CAPACITY	15 CU. FT
POWER SOURCE	440V 50 Hz 3PHASE
POWER CONSUMPTION	3HP 2.25kW
AIR PRESSURE	1 BAR
MACHINE WEIGHT	500kg
NOISE LEVEL	85dB