

STRING HANDLING SOLUTIONS

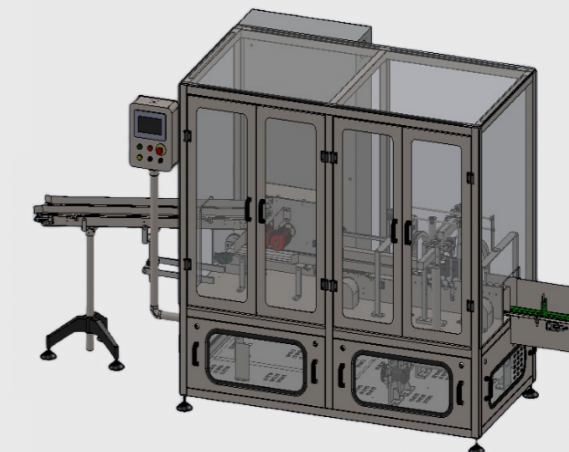
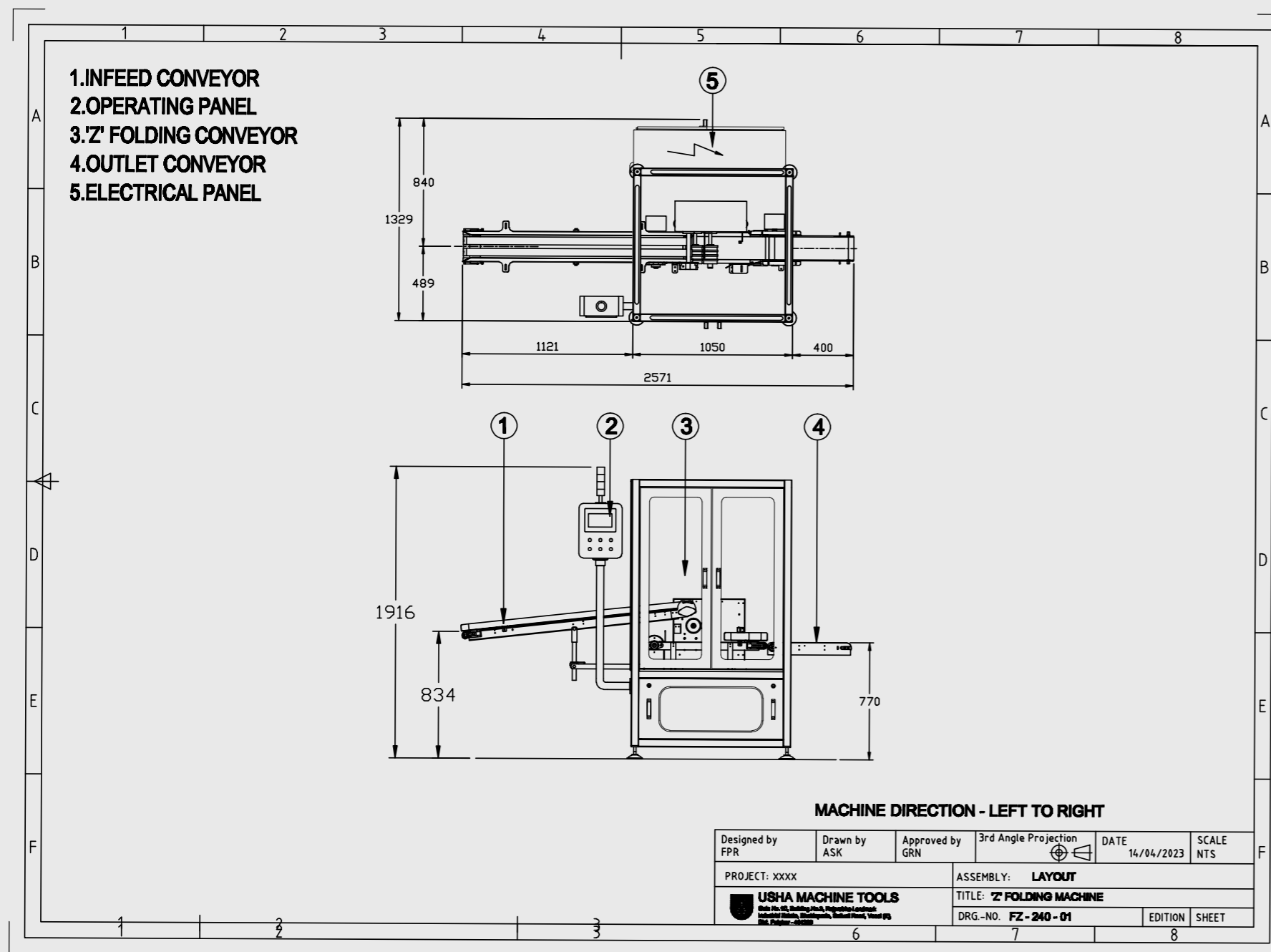
MODEL: SFM-240



USHA MACHINE TOOLS
DELIVERS THE PACKAGING SOLUTION YOU NEED

SFM-240 uses a set of rollers and conveyors operating on a combination of servos and sensors to perform folds of a specific length. This machine has a compact design making it easy to install. These machines are used for the folding of strings producing 240PPM. A separate collation unit is available for forming a matrix/stacking of folded strings.

MACHINE LAYOUT



https://youtu.be/83E_PoHlr4M

Client Projects With SFM-240

- With Collation

TECHNICAL SPECIFICATIONS

M.O.C.	S.S. 304 / M.S. (POWDER COATED)
MACHINE DIMENSIONS (LxWxH)	2571mm x 1329mm x 1916mm
SACHET WEIGHT	10g - 30g
SACHET WIDTH (Maximum)	50mm - 100mm
SACHET THICKNESS (Maximum)	5mm - 20mm
MATRIX HEIGHT	Up to 45mm
STRING LENGTH	Up to 1300mm (Customizable)
FOLDING FORMATS	4x3, 5x2 (Customizable)
MACHINE SPEED	Up to 240 PPM
POWER SOURCE	440V 50Hz 3 PHASE
POWER CONSUMPTION	2 HP
AIR PRESSURE	NIL
NOISE LEVEL	75dB
MACHINE WEIGHT	500Kg

