

LINEAR BOTTLE UN-SCRAMBLER

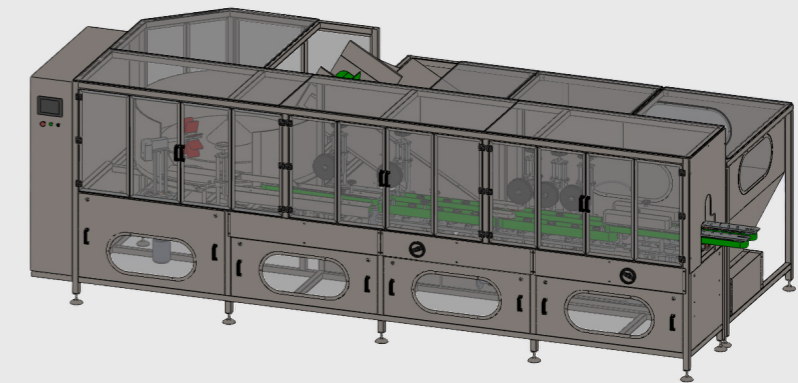
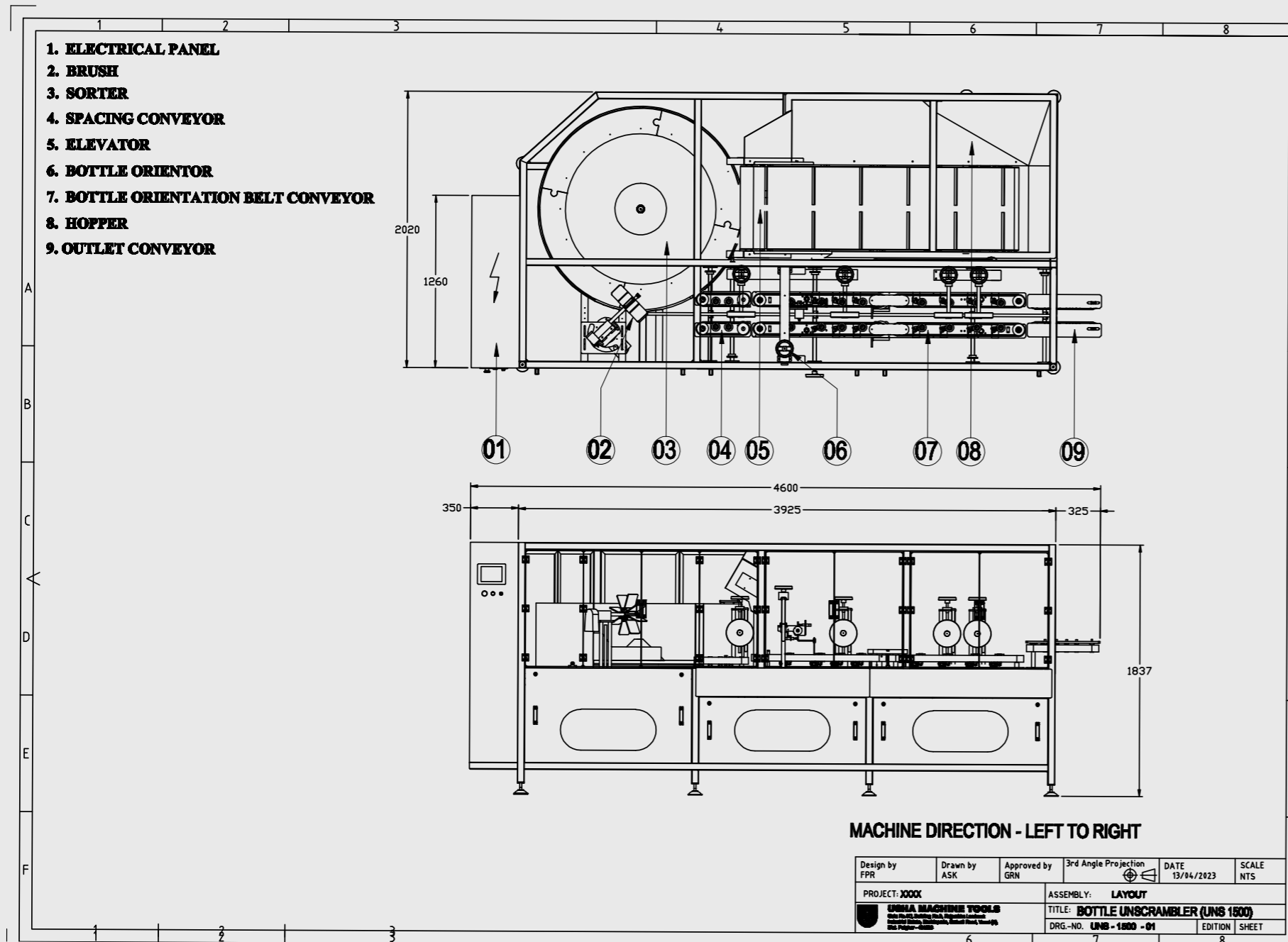
MODEL: UNS-1500



USHA MACHINE TOOLS
DELIVERS THE PACKAGING SOLUTION YOU NEED

UNS-1500 is specially designed for large fill bottles with heights up to 290mm. UNS-1500 is suited for Lubricant & Automotive Industries or FMCG plants with large volume fills in jerry cans up to 5000ml. This machine is able to handle bottles in the range of 500ml to 5L in volume. Speeds of up to 180 BPM makes this machine a must in high-speed production facilities.

MACHINE LAYOUT



<https://youtu.be/7c97IjyUJvY>

Client Projects With UNS-1500

- With In-Line Bottle Pucking System
- With Accumulation Conveyor
- With Secondary Orientation for Off-Centre Necked Bottles

TECHNICAL SPECIFICATIONS

M.O.C.	S.S. 304 / M.S. (POWDER COATED)
MACHINE DIMENSIONS (LxWxH)	5875mm x 2400mm x 1850mm
BOTTLE SHAPES	Round Rectangular Square
BOTTLE DIAMETER (Maximum)	60mm - 75mm 225mm x 80mm
BOTTLE HEIGHT (Maximum)	120mm - 280mm
BOTTLE VOLUME	500ml - 5L
MACHINE SPEED	60 BPM - 180 BPM
HOPPER CAPACITY	32 CU. FT
POWER SOURCE	440V 50 Hz 3PHASE
POWER CONSUMPTION	8HP 6kW
AIR PRESSURE	3 BAR
MACHINE WEIGHT	1500kg
NOISE LEVEL	85dB